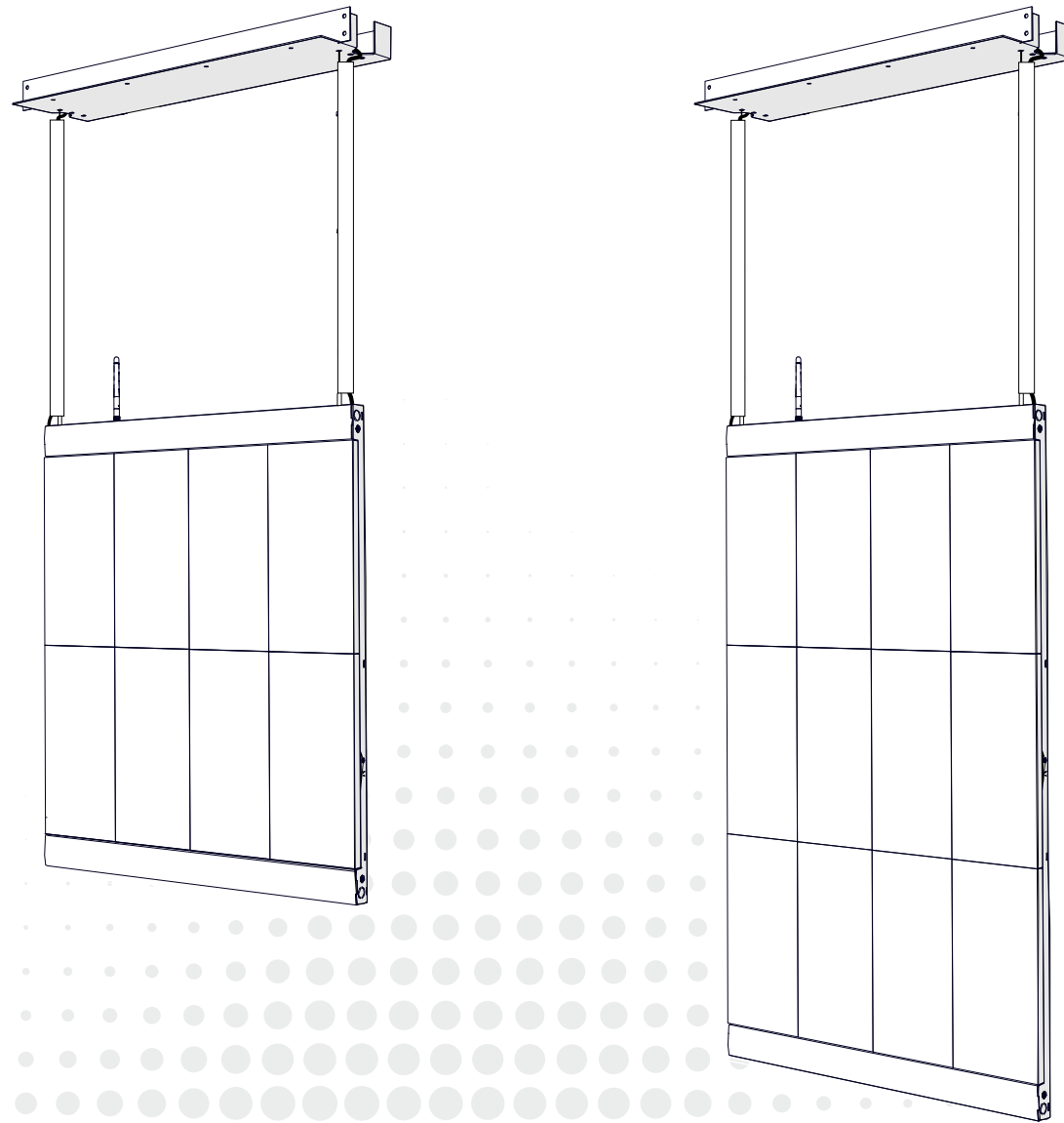






Network Connection Guide



Easy steps connection!

- A** How your LED Poster works
-  **B** Option 1: Wire connection
-  **C** Option 2: Wifi connection
- D** Start publishing content



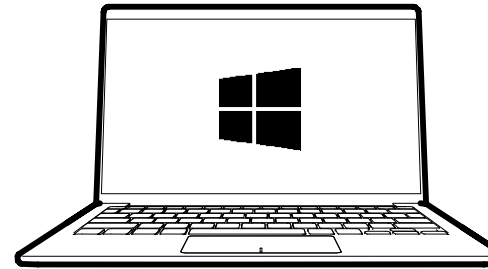
NUMMAX TECH SUPPORT

+1 877 255-3471 #205 (EST)

service@nummax.com



You will need



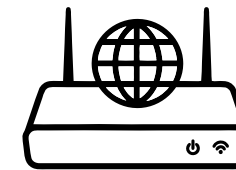
A Windows OS computer

X

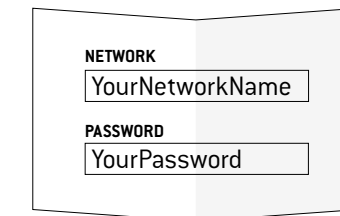
Mac users:



Once your Nummax LED Poster's all set, you will be able to use your Mac to access the local software with the Poster's local IP and your favorite browser. But the LED Poster settings with the USB cable can only be done with a computer running Windows OS.



+



An active Internet connection



A RJ45 cable

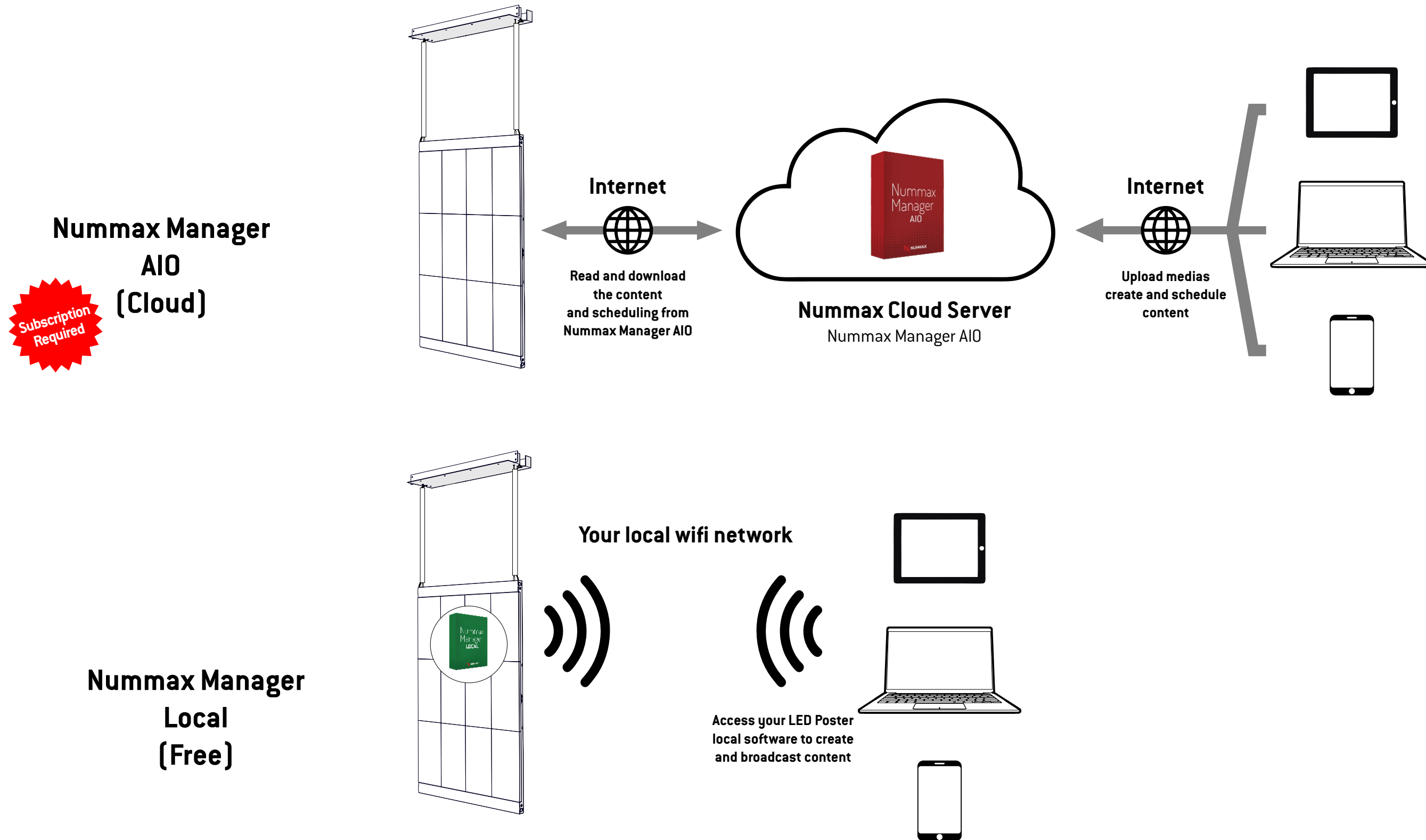
Optional: For wire connection only

Provided in your LED Poster box



An USB A-B cable

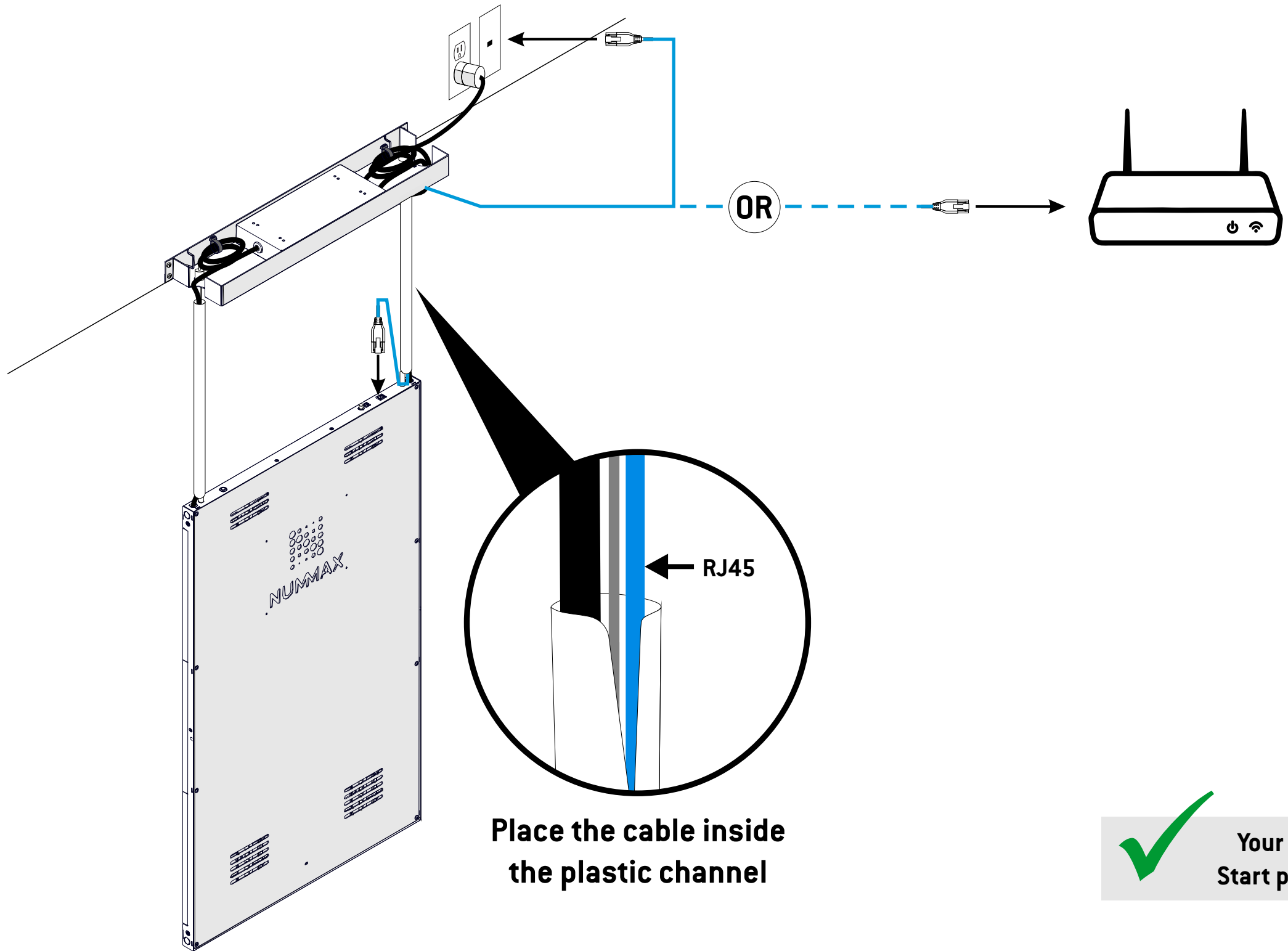
In order to communicate with your LED Poster and publish your content, you need to connect the Poster to the Internet (Nummax Manager AIO) or just to your local wifi network (Nummax Manager Local)




B

Option 1: Wire connection

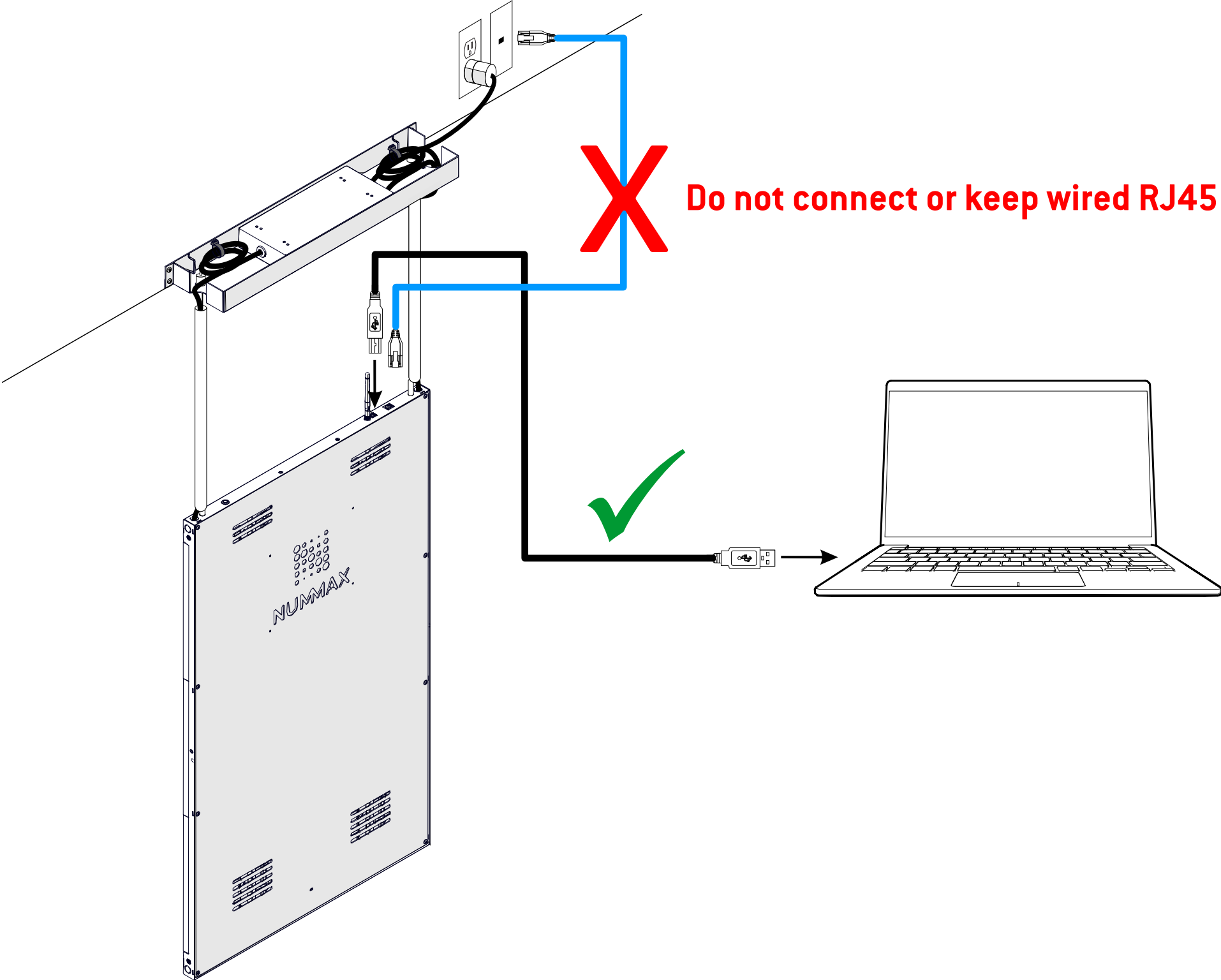
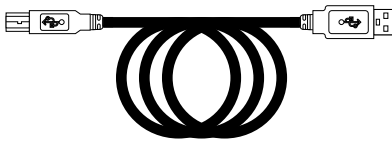
Connect the RJ45 cable in your LED Poster or LED Pro Poster and in your local router.
You can pass the RJ45 cable inside the plastic channel.



Place the cable inside the plastic channel

 Your Poster is connected!
Start publishing, go to Page 9

1 Connect your computer to the display with the USB cable.



Do not connect or keep wired RJ45 cable

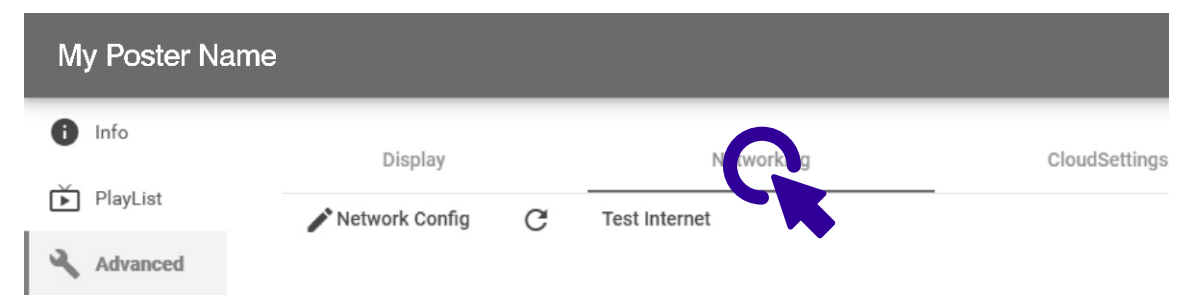
2 Open your Internet browser and input the following IP address: **192.168.42.129**
You will access your poster local software where you can set your wifi connection.



3 Once in the LED Poster or LED Pro Poster local software. Click on: **Advanced** in the left menu

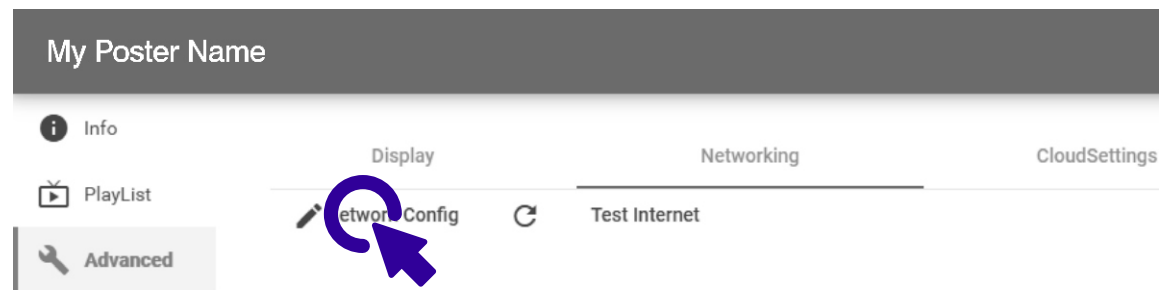


4 Then click on the **Networking** tab.



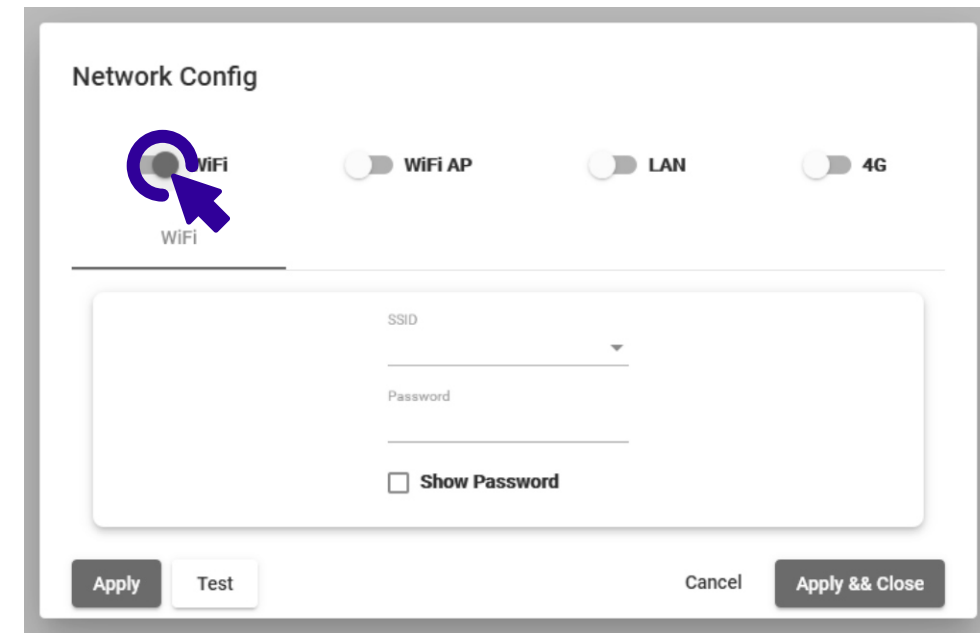
5

Click on **Network Config** to edit the wifi.



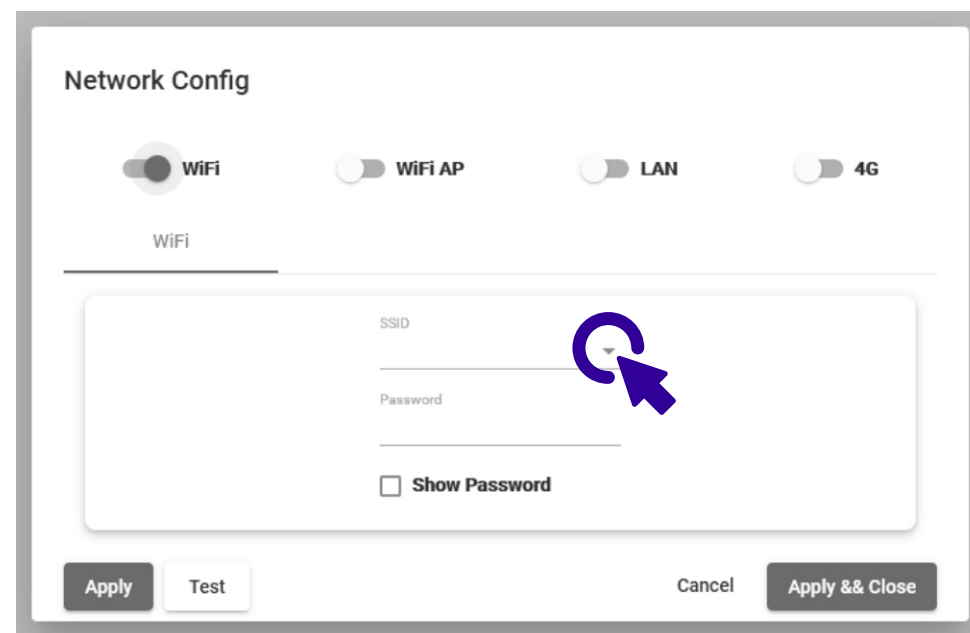
6

Uncheck all the options and **check Wifi**.



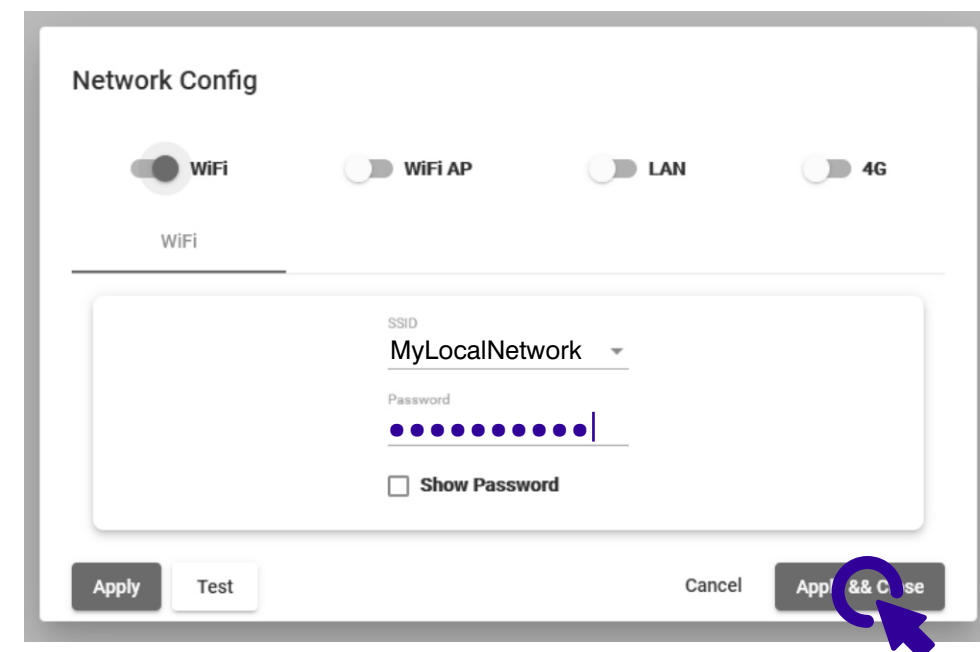
7

Click the **right arrow** to **search and select** your local network (SSID).

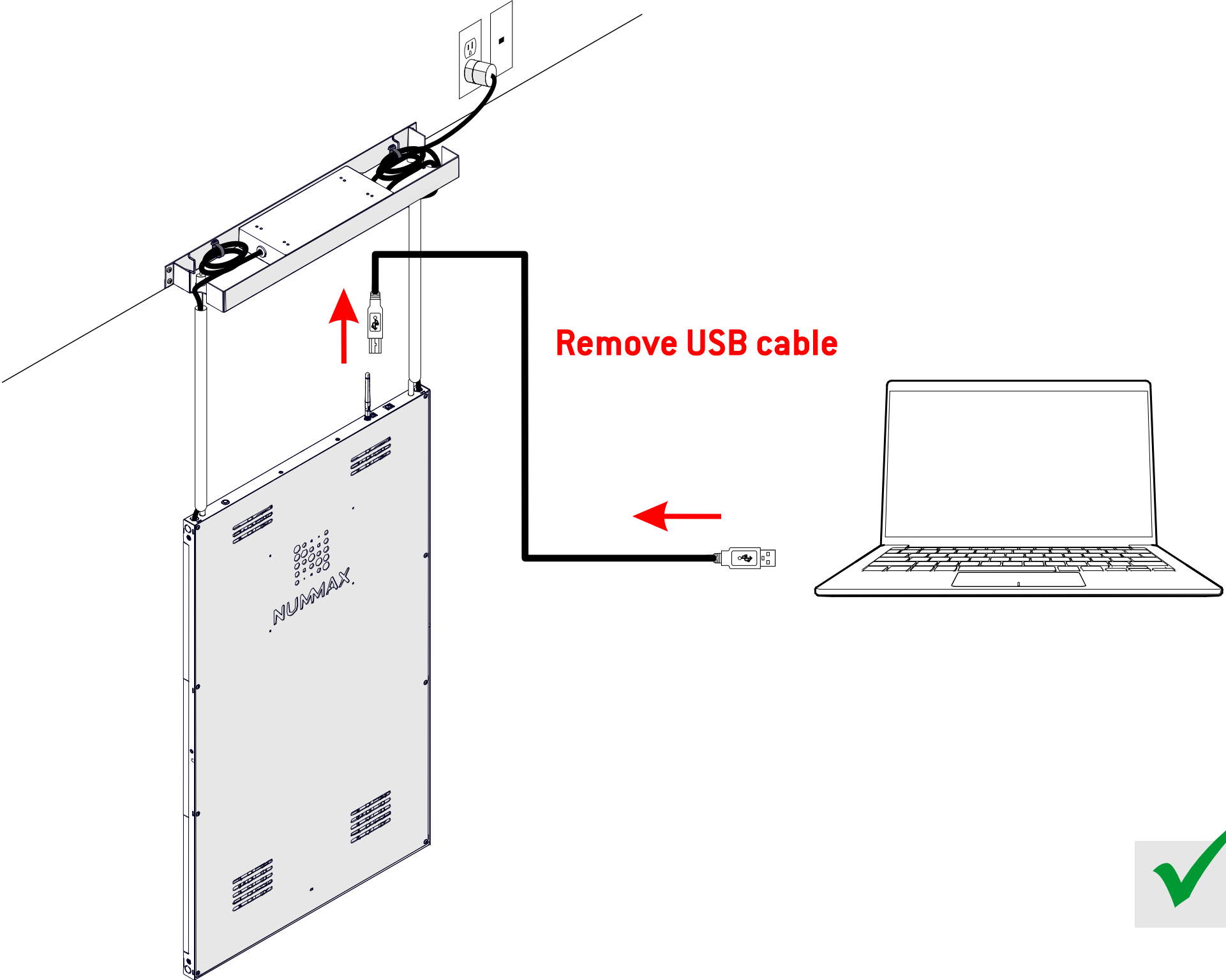


8

Input **your network password** and click **Apply & Close**.



- 9** Remove the USB cable.
Your LED Poster or LED Pro Poster is now connected to your local network and can communicate with Nummax Manager AIO server or your Nummax Manager Local software.



 **Your Poster is connected!**
Start publishing, go to Page 9



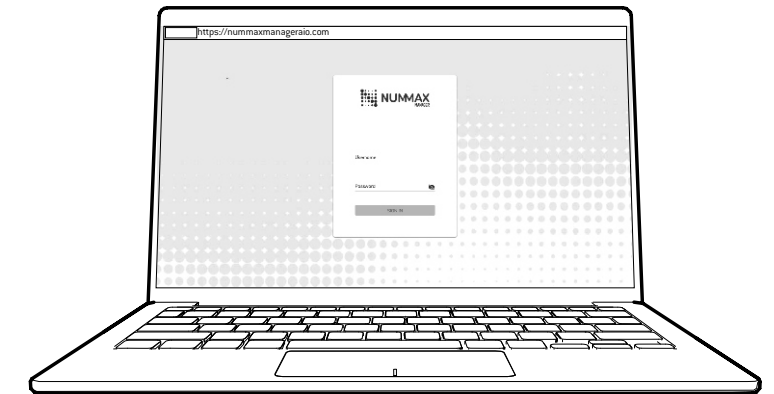
Learn how to use Nummax Manager AIO (Cloud)

Watch the complete training video
<https://youtu.be/dASaQaf7n5M>

Book your online training now!
<https://calendly.com/nummaxmanager/nummax-manager-online-training>

Download the complete Nummax Manager User's Guide
<https://nummax.com/en/download/>

Check our online video tutorials
<https://nummax.com/en/academy-2/>



Learn how to use Nummax Manager LOCAL (Free)

Download the complete Nummax Manager User's Guide
<https://nummax.com/en/download/>

Check our online video tutorials
<https://nummax.com/en/academy-2/>

